

**2011
SERVICE AND
MAINTENANCE GUIDE**



VEHICLE IDENTIFICATION

Vehicle Identification Number (VIN) _____

Delivery Date _____

Warranty Start Date _____

Mileage at Delivery _____

Model Year _____

Selling Dealer _____

Selling Dealer Phone _____

TABLE OF CONTENTS



OWNER'S LITERATURE INFORMATION 2

INTRODUCTION

NISSAN Maintenance	3
Why NISSAN Service?	4

NISSAN MAINTENANCE & REPAIR SUPPORT

Extended Service Plans	8
Genuine NISSAN Collision Parts	9
Genuine NISSAN Parts You Can Rely On	33, 37, 45, 49
NISSAN services designed with you in mind	41

SCHEDULED MAINTENANCE GUIDE

GT-R Performance Optimization Services	18, 20, 22, 24
Determining the Proper Maintenance Interval	10
Explanation of Scheduled Maintenance Items	11
Additional Maintenance Items	13
Transmission replacement log	16
Maintenance Log and Records	17

OWNER'S LITERATURE INFORMATION

INDEX OF TOPICS

WHERE TO FIND INFORMATION

Recommended Fuel, Lubricants, Fluids	<i>Owner's Manual: chapter 9</i>
Starting and Driving Your Vehicle	<i>Owner's Manual: chapter 5</i>
Security System Operation	<i>Owner's Manual: chapter 2</i>
Changing a Flat Tire	<i>Owner's Manual: chapter 6, also see chapter 8</i>
New Vehicle Limited Warranty	<i>Warranty Information Booklet: page 4</i>
Federal Emission Control Warranties	<i>Warranty Information Booklet: page 7</i>
California Emission Control Warranties	<i>Warranty Information Booklet: page 10</i>
Tire Pressure/Rotation	<i>Owner's Manual: chapter 8</i>
Tire Warranties/Safety Information	<i>Warranty Information Booklet: pages 15 to 37</i>
Consumer Affairs Assistance	<i>Warranty Information Booklet: page 2</i> <i>Customer Care/Lemon Law Information Booklet: page 5*</i>
Do It Yourself Information	<i>Owner's Manual: chapter 8</i>
General Maintenance	<i>Owner's Manual: chapter 8</i>

* Not applicable outside the United States



Maintain Your Investment

Preventative scheduled maintenance is an important investment to optimize the performance, reliability, safety and resale value of your NISSAN GT-R. Scheduling your vehicle's maintenance at the recommended intervals will ensure your vehicle is running at its best.

We want you to enjoy your NISSAN GT-R. This Service and Maintenance Guide is designed to help you make sure your vehicle receives proper and timely maintenance that is necessary. Key services are explained in detail, along with an outline of scheduled maintenance to help you maintain your vehicle. Your GT-R certified NISSAN dealer can assist you in determining the best schedule based on your driving habits and local conditions.

Failure to perform scheduled maintenance may result in excluding portions of your vehicle from warranty coverage and may reduce the performance, safety, reliability and/or resale value of your vehicle. For details of the warranty, please read the 2011 NISSAN GT-R Warranty Information Booklet.

WHY NISSAN SERVICE? *



As to specific service to the GT-R, special skills, knowledge and equipment are necessary to properly inspect and adjust the GT-R engine, transmission, suspension and brakes to maintain performance. A GT-R certified NISSAN dealer has the GT-R certified technical staff and the special equipment to properly maintain your GT-R.

Many general maintenance items can be performed at all NISSAN dealers. However, make sure the specified other fluids and parts are used when the maintenance is performed.



For All Your Service Needs

WHY NISSAN SERVICE?*



To safeguard the quality, reliability and safety of your vehicle, a GT-R certified NISSAN dealer is recommended for maintenance or repair. Only GT-R certified NISSAN dealers offer you these advantages:

- NISSAN trained and certified GT-R technicians
- Immediate access to warranty service history and NISSAN technical information
- Latest diagnostic, special tools and service techniques
- Genuine NISSAN Parts that meet NISSAN's demanding standards
- 12 month/12,000 mile parts and labor limited warranty when Genuine NISSAN Parts are installed by your dealer
- Lifetime limited warranty on select replacement parts
- Clear, up-front estimates
- Nearly 700 GT-R certified locations nationwide
- Shuttle service/Courtesy van (at participating dealers)
- Access to a NISSAN certified body repair facility

Your GT-R certified NISSAN dealer is a full-service maintenance and repair center. We recommend using authorized NISSAN Service and Genuine NISSAN Parts that we have designed for their reliability, safety and suitability for your NISSAN vehicle. We are committed to providing you with quick, efficient and competitively priced service and parts.

* May differ or not apply outside the United States, please inquire of your dealer.



About GT-R Maintenance

The GT-R is Nissan's first supercar category vehicle. The GT-R is equipped with special systems. These systems are different than those used on conventional vehicles to allow for the high performance driving characteristics of the GT-R. Your GT-R should be maintained by a GT-R certified NISSAN dealer. Special skills, knowledge and equipment are necessary to properly maintain your GT-R.

Special skill, knowledge and equipment are necessary to properly inspect and adjust the GT-R engine, transmission, suspension and brakes to maintain performance. A GT-R certified NISSAN dealer has the GT-R certified technical staff and the special equipment to properly maintain your GT-R.

Nissan recommends maintenance items that require the replacement of parts, engine oil, oil filters, and air filters should be performed by a GT-R certified dealer. Make sure the specified fluids and parts are used when the maintenance is performed. NISSAN also recommends the replacement of parts such as the brakes should be performed by a GT-R certified dealer.

For recommended and/or required GT-R lubricants and fluids, refer to Chapter 9 of your owner's manual.



GT-R Performance Optimization Services

In addition to the regular maintenance recommended by NISSAN, the GT-R requires the following Inspections;

Measurement and adjustment of wheel alignment if needed (unladen with fuel and lubricants full, including tire pressure adjustment) Note 1

- Note 1: This vehicle is equipped with a high performance suspension. As the suspension components "break-in", the vehicle's wheel alignment needs to be measured and adjusted by a GT-R certified dealer at the recommended intervals.

Engine settings (balancing of air flow for left and right banks) Note 2

- Note 2: Each cylinder bank of this engine operates independently due to the vehicle's twin turbocharger design. Each side of the engine must operate at the same level of performance. The air flow of each bank must be checked and adjusted as necessary by a GT-R certified NISSAN dealer.

Transmission settings Note 3

- Note 3: The design of the clutch and transmission requires inspection and adjustment of the clutch and shift forks by a GT-R certified NISSAN dealer at the recommended intervals. Depending on driving conditions, more frequent adjustments may be necessary to help maximize vehicle performance.

These inspections are required at the following intervals: 1,000 miles, 12 months, 24 months and 36 months.

These inspections will be performed free of charge at a GT-R certified NISSAN dealer only. See your 2011 NISSAN GT-R Warranty Information Booklet for details.

After the period of GT-R performance optimization services in the first three years, these items are included in the regular scheduled maintenance.

*Repairs and adjustments involving part replacement, etc. determined to be necessary as a result of these inspections are performed at the customer's expense.

*See your 2011 NISSAN GT-R Warranty Information Booklet for significant limitations, exclusions, and possible voiding of warranty resulting from failure to have these necessary inspections, repairs and/or adjustments performed.

EXTENDED SERVICE PLANS *



Security+Plus®

VEHICLE PROTECTION PLAN

If someone told you, you could drive your new GT-R for the next 7 years or 100,000 miles, almost worry-free of unexpected repair costs, would you be interested?

NISSAN's "**Security+Plus**" family of extended service contracts delivers the peace of mind that does just that. **Security+Plus** vehicle protection plans can cover everything from over 1,100 vehicle components to roadside assistance to rental vehicle costs and provide: **Coverage** (at GT-R certified NISSAN dealers); utilizing: **Genuine NISSAN Parts** (new or in some cases remanufactured); installed by: **Factory Trained Technicians** (trained by us to work on your GT-R). And you'll be protected against future inflation (rising cost of parts and labor).

Security+Plus coverage can be purchased any time within your GT-R's original 3-year/36,000-mile new vehicle basic limited warranty period. Just contact your selling dealer and tell them you'd like to take advantage of one of the best mechanical breakdown plans available for your GT-R today.

Maintenance+Plus®

VEHICLE SERVICE PLAN

Do you currently have someone that maintains your yard? Cleans your house? Maintains your vehicle? With **Maintenance+Plus** you'll be hiring NISSAN to maintain your GT-R to factory specification by factory trained technicians. Like Security+Plus, you'll benefit from **Coverage at GT-R certified NISSAN dealers, Genuine NISSAN Parts, Factory Trained Technicians**, and you'll be protected against future inflation (rising costs of parts and labor). What could be easier? **A special Maintenance+Plus** plan has been specifically designed for your GT-R. Didn't purchase **Maintenance+Plus** at the time of vehicle delivery? Don't sweat the small stuff, 'New' **Maintenance+Plus** contracts can be purchased any time within the first 36-months/7,500-miles of original vehicle GT-R sale date. If for some reason you missed this initial window a 'Used' **Maintenance+Plus** contract (that covers Oil and Filter changes) may be purchased at anytime throughout the life of the your vehicle GT-R. Just contact your selling dealer and tell them you'd like to take advantage of one of the best maintenance plans available for your GT-R today.

* These products not available outside the United States.

See your participating GT-R certified NISSAN dealer for details.

GENUINE NISSAN COLLISION PARTS

Your GT-R has been manufactured using a combination of stamped steel, stamped aluminum, die-cast aluminum, and carbon reinforced components and high precision assembly jigs. If you have an accident, insist on Genuine NISSAN Collision Parts. If you want your vehicle to be restored using parts made to NISSAN's original exacting specifications – if you want it to last, help to protect your personal safety and to help hold its resale value, the solution is simple. Tell your insurance agent and your repair shop to use only Genuine NISSAN Collision Parts. As special skills, information and equipment are required to correctly repair the body, be sure to contact your NISSAN dealer to locate a GT-R certified body shop in your area.

Many non-genuine parts are copies made from impressions of NISSAN parts and may not match the specifications and performance standards of Genuine NISSAN Parts. As a result, non-genuine parts may not look or fit right, and may be less safe.

The hood on your vehicle is a good example. NISSAN designed it with hood buckling creases to help prevent the hood from penetrating the interior of your vehicle in an accident. Non-genuine parts may not provide such built-in safeguards.

In some states, the law says you must be advised if non-genuine parts are used to repair your vehicle. **Why should you take a chance?**

Replacement Panel Limited Lifetime Corrosion Warranty *

If you have your collision damage repaired using Genuine NISSAN Outer Sheet Metal Panels you don't have to worry about corrosion. That's because these panels are warranted against inside out rust-through perforation for as long as you own your NISSAN. Another reason to insist on Genuine NISSAN Collision Repair Parts.

* This warranty does not apply to vehicles or parts not distributed by NISSAN North America and/or sold outside the United States.

DETERMINING THE PROPER MAINTENANCE INTERVAL

Depending on your driving habits and local conditions, you should follow one of the two maintenance schedules listed below for scheduled maintenance. In addition to Schedule 1 maintenance, additional maintenance must be performed for optimum performance. Use these guidelines to determine which maintenance schedule to use:

SCHEDULE 1 (Every 6,000 miles or 6 months, whichever comes first)

Schedule 1 features 6,000-mile service intervals. Use Schedule 1 if you primarily operate your vehicle under any of these conditions:

- Repeated short trips of less than 5 miles in normal temperatures or less than 10 miles in freezing temperatures
- Stop-and-go traffic in hot weather or low-speed driving for long distances
- Driving in dusty conditions or on rough, muddy, or salt-spread roads

SCHEDULE 2 (Every 6,000 miles or 6 months, whichever comes first)

Schedule 2 features 6,000-mile service intervals; with Schedule 2 fewer maintenance items are regularly checked or replaced than with Schedule 1.

Generally, Schedule 2 applies only to highway driving in temperate conditions. Use Schedule 2 only if you primarily operate your vehicle under conditions other than those listed in Schedule 1.

EXPLANATION OF SCHEDULED MAINTENANCE ITEMS

The following descriptions are provided to give you a better understanding of the scheduled maintenance items that should be regularly checked or replaced. The maintenance log indicates at which mileage/time intervals each item requires service.

In addition to scheduled maintenance, your NISSAN requires that some items be checked during normal day-to-day operation. You can find these items listed under “General Maintenance” in Chapter 8 of your Owner’s Manual.

Maintenance items and intervals marked with “*” are recommended by NISSAN for reliable vehicle operation. You are not required to perform such maintenance in order to maintain the emission warranty or manufacturer recall liability.

When applicable, additional information can be found in the “Maintenance and do-it-yourself” section in Chapter 8 of your Owner’s Manual.

For recommended fuel, lubricants, fluids, grease, and refrigerant, refer to Chapter 9 in your Owner’s Manual.

Emission Control System Maintenance:

Drive Belts*

Check engine drive belts for wear, fraying or cracking. Replace any damaged drive belts.

Engine Air Filter

Replace at specified intervals. When driving for prolonged periods in dusty conditions, check/replace the filter more frequently.

Engine Coolant*

Replace engine coolant at the specified interval.

Engine Oil and Oil Filter

Replace engine oil and oil filter at the specified intervals. For recommended oil grade and viscosity refer to Chapter 9 in your Owner’s Manual.

Engine Settings*

Balance the air flow for left and right banks at specified intervals.

Engine Valve Clearance*

Inspect only if valve noise increases. Adjust valve clearance if necessary.

Evaporative Emissions Control Vapor Lines*

Check vapor lines and connections for leaks or looseness. Tighten connections or replace parts as necessary.

Fuel Filter

Maintenance-free item.

EXPLANATION OF SCHEDULED MAINTENANCE ITEMS

Fuel Lines*

Check the fuel hoses, piping and connections for leaks, looseness, or deterioration. Tighten connections or replace parts as necessary.

Throttle Chamber Deposits*

Visually inspect the throttle chamber for deposits and clean as necessary.

Spark Plugs

Replace at specified intervals. Install new plugs of the same type as originally equipped.

Chassis and Body Maintenance:

Brake Lines and Cables

Visually inspect for proper installation. Check for chafing, cracks, deterioration, and signs of leaking. Replace any deteriorated or damaged parts immediately.

Brake Pads & Rotors

Check for wear, deterioration and fluid leaks. Replace any deteriorated or damaged parts immediately. Replace all four sets of brake pads and disc rotors at the same time to maintain maximum brake performance.

Exhaust System

Visually inspect the exhaust pipes, muffler and hangers for leaks, cracks, deterioration, and damage. Tighten connections or replace parts as necessary.

In-Cabin Microfilter

Replace at specified intervals. When driving for prolonged periods in dusty conditions, replace the filter more frequently.

Measurement and Adjustment of Wheel Alignment

Manage the wheel alignment by measuring and adjusting at specified intervals.

Propeller Shaft(s)

Check for damage, looseness, and grease leakage.

Steering Gear and Linkage, Axle and Suspension Parts, Drive Shaft Boots

Check for damage, looseness, and leakage of oil or grease. Under severe driving conditions, inspect more frequently.

Tire Rotation

Tires cannot be rotated as front tires are different size from rear tires.

Transmission Oil, Differential Oil

Visually inspect for signs of leakage at specified intervals. Replace the oil every 18,000 miles.

Transmission settings

To keep the best condition for transmission, this inspection allows learning of the clutch touch point and the engaged gear position and neutral position for each gear.

ADDITIONAL MAINTENANCE ITEMS

The information and specifications below apply only when engaging in performance driving. The following information applies if you engage in performance driving such as driving your GT-R for extended periods under the following conditions:

- Higher-rpm (approaching redline) operation,
- Frequent high pedal force braking from moderate and higher speeds,
- Frequent throttle activation,
- Fast revving throughout the RPM range

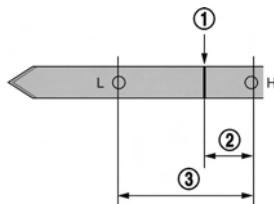
In such cases, the following additional maintenance guidelines apply. **However, you should also carefully read your 2011 NISSAN GT-R Warranty Information Booklet for important information concerning warranty coverage, limitations, and exclusions.**

We recommend that maintenance be performed at a GT-R certified NISSAN dealer. NISSAN will only pay for GT-R Performance Optimization Services performed at a GT-R certified NISSAN dealer.

FLUIDS

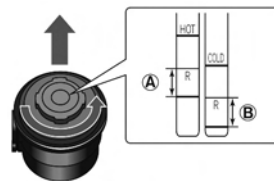
The information and specifications below apply only when engaging in performance driving.

- Before driving, check the fluid levels and adjust as necessary using the specified fluid.
- NISSAN recommends to adjust the engine oil level ① to be 0.39 in. (10 mm) ② below the H mark on the engine oil dipstick. ③ range is 1.18 in (30 mm).



Before checking the oil level, run the engine until it reaches operating temperature and wait at least 5 minutes after turning off the engine. Make sure the oil level always remains above the L mark.

- Adjust the power steering fluid level at the R mark on the power steering dipstick. Fluid temperature: Hot: 122 to 176°F (50 to 80°C) (A) Cold: 32 to 86°F (0 to 30°C) (B)



- Be sure to change the fluids listed below with the specified fluids after driving. Fluid temperature can be checked on the multi function display.
 - Engine Coolant Temperature
 - Engine Oil Temperature
 - Transmission Oil TemperatureSee the separate Multi Function Display Owner's Manual.

ADDITIONAL MAINTENANCE ITEMS, CONTINUED



ITEMS		Engine Oil	
GT-R SPECIFIED FLUIDS		Mobil 1 (0W-40)*1	
MAINTENANCE INTERVAL	<ul style="list-style-type: none"> When the oil temperature stays below 230°F (110°C) while driving 	Change engine oil and engine oil filter at the same interval as Schedule 1 and 2 in the 2011 NISSAN GT-R Service and Maintenance Guide section.	
	<ul style="list-style-type: none"> When the oil temperature reaches between 230°F (110°C) and 266°F (130°C) while driving 	Change engine oil and engine oil filter every 3,000 miles (5,000 km).	
	<ul style="list-style-type: none"> When the oil temperature exceeds 266°F (130°C) while driving 	Change engine oil and engine oil filter immediately after stopping.	
ITEMS		Transmission Oil	
GT-R SPECIFIED FLUIDS		Genuine NISSAN Transmission Oil R35 Special	
MAINTENANCE INTERVAL	<ul style="list-style-type: none"> When the oil temperature stays below 248°F (120°C) while driving 	Change transmission oil at the same interval as Schedule 1 and 2 in the 2011 NISSAN GT-R Service and Maintenance Guide section.	
	<ul style="list-style-type: none"> When the oil temperature reaches between 248°F (120°C) and 284°F (140°C) while driving 	Change transmission every 3,000 miles (5,000 km).	
	<ul style="list-style-type: none"> When the oil temperature exceeds 284°F (140°C) while driving 	Change both transmission oil and differential oil immediately after stopping. Differential oil temperature usually increases concurrently.	
ITEMS		Differential Oil (front and rear)	
GT-R SPECIFIED FLUIDS		Castrol SAF-XJ 75W-140	
MAINTENANCE INTERVAL		Change differential oil every 3,000 miles (5,000 km).	
ITEMS		Brake Fluid	
GT-R SPECIFIED FLUIDS		Genuine NISSAN Brake Fluid R35 Special II*2	
MAINTENANCE INTERVAL		Change brake fluid every 3,000 miles (5,000 km).	

*1: Mobil 1 (0W-40) (100% synthetic) is the factory fill oil. The VR38 engine with its plasma-sprayed bores was developed using this oil. NISSAN cannot ensure proper engine operation and durability if other 0W-40 synthetic oil is used. If Mobil 1 (0W-40) is not available, Mobil 1 (10W-40) (100% synthetic) may be used; however, some performance loss may be noticed.

*2: Genuine NISSAN Brake Fluid R35 Special II is the factory fill brake fluid. The Vehicle Dynamic Control (VDC) unit and other related parts were specially designed for this brake fluid and NISSAN cannot ensure the best performance and proper operation of the vehicle if other brake fluid is used.

ADDITIONAL MAINTENANCE ITEMS, CONTINUED

INSPECTION AND ADJUSTMENTS OF TIRES, SUSPENSION, CLUTCHES AND BRAKES

The information and specifications below apply only when engaging in performance driving.

- Measure and adjust (if needed) the wheel alignment.
- Check tire wear.
- Check the tire pressure and adjust the pressure as necessary when the tires are cold. Refer to GT-R Owner's Manual.
- Make sure the tire valve stem cap is installed and that the valve stem is tight.
- Make sure the wheel nuts are tight.
- Make sure the drive shaft nuts are tight.
- Secure road wheel balance weights with aluminum tape or equivalent.
- Make sure the tire has not slipped on the wheel causing the assembly to be out of balance. The reference marks on the tire and wheel should be aligned. If the reference marks are not aligned, the tire has slipped on the wheel. Have the wheels/tires rebalanced. Make sure the old reference marks are erased and new reference marks are applied to the wheel and tire. When installing new tires on the wheels, make sure new reference marks are applied to the wheels and tires.
- Check for the heat deterioration of the brakes and parts around the brakes.

NISSAN recommends that the brakes should be bled before engaging in performance driving and when replacing the brake fluid. It is recommended that bleeding the brakes be performed when the brake calipers are hot [about 212°F (100°C)]

- Check around the engine, transmission, differential and under the vehicle for oil and coolant leaks.
- Before engaging in performance driving, the clutch clearance may need to be adjusted. See your GT-R certified NISSAN dealer for information. NOTICE: Failure to have the clutches properly adjusted before performance driving may cause the transmission oil temperature to increase which may cause transmission damage.
- Check the steering and suspension system and other links for loose and/or damaged parts before and after driving.

REPLENISHING COOLANT

The information and specifications below apply only when engaging in performance driving.

Check the coolant level in the pressurized coolant reservoir tank. Adjust the level so that the fluid is between the MAX and MIN markings. For the coolant, use genuine NISSAN Blue Long Life Antifreeze/Coolant. (On delivery of a new vehicle, the reservoir is filled up to the MIN level. Be sure to replenish approximately 0.3 to 0.4 US quart (0.3 to 0.4 liter) of coolant.) NOTICE: Do not overfill the coolant. This may increase the pressure in the cooling system and

cause coolant leaks.

COOLANT MIXTURE RATIO

The information and specifications below apply only when engaging in performance driving. For maximum cooling system performance, the coolant mixture ratio should be a combination of 30% antifreeze and 70% demineralized or distilled water.

If ambient temperatures are anticipated below 5°F (-15°C), make sure a proper mixture ratio of 50% antifreeze and 50% demineralized or distilled water is used.

Do not add coolant over the MAX level. This may cause coolant leaks because the pressure in the cooling system may become too high and a hose may become disconnected.

To maximize vehicle performance, the coolant mixture ratio should be a combination of 30% antifreeze and 70% demineralized or distilled water for maximum cooling system performance regardless of ambient temperatures.

COOL DOWN

The information and specifications below apply only when engaging in performance driving.

Cool down the vehicle to help extend the life of the vehicle if coolant temperatures are extremely high. Drive the vehicle at 37 to 50 MPH (60 to 80 km/h), in 5th or 6th gear for 2 to 3 miles (3 to 5 km) and then stop the engine.

TRANSMISSION ASSEMBLY REPLACEMENT RECORD

When replacing the transmission assembly, be sure to record the new serial number in the space provided.

Transmission Serial No.	Dealer name or signature
<input type="text"/> <input type="text"/> <input type="text"/> <input type="text"/> <input type="text"/> <input type="text"/> <input type="text"/> <input type="text"/> <input type="text"/> <input type="text"/> <input type="text"/> <input type="text"/>	
Date:	
Mileage at replacement:	Miles

Transmission Serial No.	Dealer name or signature
<input type="text"/> <input type="text"/> <input type="text"/> <input type="text"/> <input type="text"/> <input type="text"/> <input type="text"/> <input type="text"/> <input type="text"/> <input type="text"/> <input type="text"/> <input type="text"/>	
Date:	
Mileage at replacement:	Miles

Transmission Serial No.	Dealer name or signature
<input type="text"/> <input type="text"/> <input type="text"/> <input type="text"/> <input type="text"/> <input type="text"/> <input type="text"/> <input type="text"/> <input type="text"/> <input type="text"/> <input type="text"/> <input type="text"/>	
Date:	
Mileage at replacement:	Miles

MAINTENANCE LOG AND RECORDS



The following Maintenance Log has been compiled by NISSAN to assist you in performing the recommended maintenance services and keeping appropriate records of services performed. The maintenance log is composed of the log for GT-R special inspections and the log for scheduled maintenance. Along with the related repair invoices, receipts, and other such records, a properly documented maintenance history could enhance the value of your vehicle should you ever wish to sell it. The services listed represent the minimal NISSAN recommended requirements for each time/mileage interval, up to 96,000 miles / 96 months.

Abbreviations

[]: Performed based on the mileage only.

< >: Performed based on the number of months only.

GT-R Complimentary Performance Optimization Services*

*Necessary repairs discovered during inspections may incur service charges.

1,000 MILES

- Inspect the following:
 - Measurement and adjustment (if needed) of wheel alignment
 - Transmission settings
 - Engine settings¹

Dealer Verified Service Stamp

Dealer name: _____

Date: _____

Mileage: _____

¹ Balancing of air flow for left and right banks

GT-R Performance Optimization Service Log Record of Service Details

Measurement and Adjustment of wheel alignment

Measured Values

FR	Total Toe-In			in/mm
	Camber	LH		Deg/min (Dec/Deg)
		RH		Deg/min (Dec/Deg)
	Caster	LH		Deg/min (Dec/Deg)
RH			Deg/min (Dec/Deg)	
RR	Total Toe-In			in/mm
	Camber	LH		Deg/min (Dec/Deg)
		RH		Deg/min (Dec/Deg)

Adjusted Values

FR	Total Toe-In			in/mm
	Camber	LH		Deg/min (Dec/Deg)
		RH		Deg/min (Dec/Deg)
	Caster	LH		Deg/min (Dec/Deg)
RH			Deg/min (Dec/Deg)	
RR	Total Toe-In			in/mm
	Camber	LH		Deg/min (Dec/Deg)
		RH		Deg/min (Dec/Deg)

Engine Settings

Measured Values

Engine Speed		rpm
Coolant Temp.		*F (°C)
Engine Oil Temp		*F (°C)
MAS A/F SE-B1		mV
MAS A/F SE-B2		mV
Throttle Angle-B1		deg
Throttle Angle-B2		deg

Transmission Settings

Measured Values

Engine Speed		rpm
Trans. Oil Temp.		*F (°C)

Status of Transmission Setting

	Previous Learned Value
Clutch Gear Learning	Current Learned Value

* Circle the settings as delivered to the Customer

Clutch A touch point setting value	
Clutch B touch point setting value	
Adjust clutch A capacity setting value	
Adjust clutch B capacity setting value	

Customer Name	
Address	

Mileage	Miles/km
Dealer Name	
Date	
Technician Name	

Notes:

GT-R Complimentary Performance Optimization Services*

*Necessary repairs discovered during inspections may incur service charges.

12 MONTHS

- Inspect the following:
 - Measurement and adjustment (if needed) of wheel alignment
 - Transmission settings
 - Engine settings¹

Dealer Verified Service Stamp

Dealer name: _____

Date: _____

Mileage: _____

¹ Balancing of air flow for left and right banks

- Refer to the appropriate Schedule 1 or Schedule 2, recommended maintenance schedule for additional maintenance items.

GT-R Performance Optimization Service Log Record of Service Details

Measurement and Adjustment of wheel alignment

Measured Values

FR	Total Toe-In			in/mm
	Camber	LH		Deg/min (Dec/Deg)
		RH		Deg/min (Dec/Deg)
	Caster	LH		Deg/min (Dec/Deg)
RH			Deg/min (Dec/Deg)	
RR	Total Toe-In			in/mm
	Camber	LH		Deg/min (Dec/Deg)
		RH		Deg/min (Dec/Deg)

Adjusted Values

FR	Total Toe-In			in/mm
	Camber	LH		Deg/min (Dec/Deg)
		RH		Deg/min (Dec/Deg)
	Caster	LH		Deg/min (Dec/Deg)
RH			Deg/min (Dec/Deg)	
RR	Total Toe-In			in/mm
	Camber	LH		Deg/min (Dec/Deg)
		RH		Deg/min (Dec/Deg)

Engine Settings

Measured Values

Engine Speed	rpm
Coolant Temp.	°F (°C)
Engine Oil Temp	°F (°C)
MAS A/F SE-B1	mV
MAS A/F SE-B2	mV
Throttle Angle-B1	deg
Throttle Angle-B2	deg

Transmission Settings

Measured Values

Engine Speed	rpm
Trans. Oil Temp.	°F (°C)

Status of Transmission Setting

	Previous Learned Value
Clutch Gear Learning	Current Learned Value

* Circle the settings as delivered to the Customer

Clutch A touch point setting value	
Clutch B touch point setting value	
Adjust clutch A capacity setting value	
Adjust clutch B capacity setting value	

Customer Name	
Address	

Mileage	Miles/km
Dealer Name	
Date	
Technician Name	

Notes:

GT-R Complimentary Performance Optimization Services*

*Necessary repairs discovered during inspections may incur service charges.

24 MONTHS

- Inspect the following:
 - Measurement and adjustment (if needed) of wheel alignment
 - Transmission settings
 - Engine settings¹

Dealer Verified Service Stamp

Dealer name: _____

Date: _____

Mileage: _____

- ¹ Balancing of air flow for left and right banks
- Refer to the appropriate Schedule 1 or Schedule 2, recommended maintenance schedule for additional maintenance items.

GT-R Performance Optimization Service Log Record of Service Details

Measurement and Adjustment of wheel alignment

Measured Values

FR	Total Toe-In		in/mm
	Camber	LH	Deg/min (Dec/Deg)
		RH	Deg/min (Dec/Deg)
	Caster	LH	Deg/min (Dec/Deg)
RH		Deg/min (Dec/Deg)	
RR	Total Toe-In		in/mm
	Camber	LH	Deg/min (Dec/Deg)
		RH	Deg/min (Dec/Deg)

Adjusted Values

FR	Total Toe-In		in/mm
	Camber	LH	Deg/min (Dec/Deg)
		RH	Deg/min (Dec/Deg)
	Caster	LH	Deg/min (Dec/Deg)
RH		Deg/min (Dec/Deg)	
RR	Total Toe-In		in/mm
	Camber	LH	Deg/min (Dec/Deg)
		RH	Deg/min (Dec/Deg)

Engine Settings

Measured Values

Engine Speed	rpm
Coolant Temp.	°F (°C)
Engine Oil Temp	°F (°C)
MAS A/F SE-B1	mV
MAS A/F SE-B2	mV
Throttle Angle-B1	deg
Throttle Angle-B2	deg

Transmission Settings

Measured Values

Engine Speed	rpm
Trans. Oil Temp.	°F (°C)

Status of Transmission Setting

Clutch Gear Learning	Previous Learned Value
	Current Learned Value

* Circle the settings as delivered to the Customer

Clutch A touch point setting value	
Clutch B touch point setting value	
Adjust clutch A capacity setting value	
Adjust clutch B capacity setting value	

Customer Name	
Address	

Mileage	Miles/km
Dealer Name	
Date	
Technician Name	

Notes:

GT-R Complimentary Performance Optimization Services*

*Necessary repairs discovered during inspections may incur service charges.

36 MONTHS

- Inspect the following:
 - Measurement and adjustment (if needed) of wheel alignment
 - Transmission settings
 - Engine settings¹

Dealer Verified Service Stamp

Dealer name: _____

Date: _____

Mileage: _____

- ¹ Balancing of air flow for left and right banks
- Refer to the appropriate Schedule 1 or Schedule 2, recommended maintenance schedule for additional maintenance items.

GT-R Performance Optimization Service Log Record of Service Details

Measurement and Adjustment of wheel alignment

Measured Values

FR	Total Toe-In			in/mm
	Camber	LH		Deg/min (Dec/Deg)
		RH		Deg/min (Dec/Deg)
	Caster	LH		Deg/min (Dec/Deg)
RH			Deg/min (Dec/Deg)	
RR	Total Toe-In			in/mm
	Camber	LH		Deg/min (Dec/Deg)
		RH		Deg/min (Dec/Deg)

Adjusted Values

FR	Total Toe-In			in/mm
	Camber	LH		Deg/min (Dec/Deg)
		RH		Deg/min (Dec/Deg)
	Caster	LH		Deg/min (Dec/Deg)
RH			Deg/min (Dec/Deg)	
RR	Total Toe-In			in/mm
	Camber	LH		Deg/min (Dec/Deg)
		RH		Deg/min (Dec/Deg)

Engine Settings

Measured Values

Engine Speed		rpm
Coolant Temp.		*F (°C)
Engine Oil Temp		*F (°C)
MAS A/F SE-B1		mV
MAS A/F SE-B2		mV
Throttle Angle-B1		deg
Throttle Angle-B2		deg

Transmission Settings

Measured Values

Engine Speed		rpm
Trans. Oil Temp.		*F (°C)

Status of Transmission Setting

Clutch Gear Learning	Previous Learned Value	
	Current Learned Value	

* Circle the settings as delivered to the Customer

Clutch A touch point setting value	
Clutch B touch point setting value	
Adjust clutch A capacity setting value	
Adjust clutch B capacity setting value	

Customer Name	
Address	

Mileage	Miles/km
Dealer Name	
Date	
Technician Name	

Notes:

6,000 MILES OR 6 MONTHS**SCHEDULE 1 MAINTENANCE**

- Replace engine oil and filter
- Inspect the following:
 - Axle & suspension parts
 - Brake pads & rotors
 - Drive shaft boots
 - Exhaust system
 - Front suspension ball joints
 - Propeller shaft
 - Steering gear and linkage
 - Steering linkage ball joints

SCHEDULE 2 MAINTENANCE

- Replace engine oil and filter

Dealer Verified Service Stamp

Dealer name: _____

Date: _____

Mileage: _____

12,000 MILES OR 12 MONTHS

SCHEDULE 1 MAINTENANCE



- Replace engine oil and filter
- Replace in-cabin microfilter
- Inspect the following:
 - ___ <Engine startability and abnormal sound>
 - ___ <Driving performance at low and accelerating speed>
 - ___ <Throttle chamber deposits>
 - ___ Axle & suspension parts
 - ___ Brake lines & cables
 - ___ Brake pads & rotors
 - ___ Differential oil (front & rear)
 - ___ Drive shaft boots
 - ___ Exhaust system
 - ___ Front suspension ball joints
 - ___ Transmission oil
 - ___ Propeller shaft
 - ___ Steering gear and linkage
 - ___ Steering linkage ball joints

SCHEDULE 2 MAINTENANCE



- Replace engine oil and filter
- Replace in-cabin microfilter
- Inspect the following:
 - ___ <Engine startability and abnormal sound>
 - ___ <Driving performance at low and accelerating speed>
 - ___ <Throttle chamber deposits>
 - ___ Brake lines & cables
 - ___ Brake pads & rotors
 - ___ Differential oil (front & rear)
 - ___ Drive shaft boots
 - ___ Transmission oil
 - ___ Propeller shaft

< >: Performed based on the number of service months only.

Refer to the appropriate GT-R Performance Optimization Services section for additional maintenance items.

Dealer Verified Service Stamp

Dealer name: _____

Date: _____

Mileage: _____

18,000 MILES OR 18 MONTHS

SCHEDULE 1 MAINTENANCE

- Replace engine oil and filter
- [Replace transmission oil]
- [Replace differential oil (front & rear)]
- Inspect the following:
 - Axle & suspension parts
 - Brake pads & rotors
 - Drive shaft boots
 - Exhaust system
 - Front suspension ball joints
 - Propeller shaft
 - Steering gear and linkage
 - Steering linkage ball joints

SCHEDULE 2 MAINTENANCE

- Replace engine oil and filter
- [Replace transmission oil]
- [Replace differential oil (front & rear)]

[]: Performed based on the mileage only.

Dealer Verified Service Stamp

Dealer name: _____

Date: _____

Mileage: _____

24,000 MILES OR 24 MONTHS

SCHEDULE 1 MAINTENANCE

- Replace engine oil and filter
- Replace engine coolant
- Replace in-cabin microfilter
- <Replace brake fluid>
- Inspect the following:
 - ___ <Engine startability and abnormal sound>
 - ___ <Driving performance at low and accelerating speed>
 - ___ <Throttle chamber deposits>
 - ___ Axle & suspension parts
 - ___ Brake lines & cables
 - ___ Brake pads & rotors
 - ___ Differential oil (front & rear)
 - ___ Engine drive belts
 - ___ Drive shaft boots
 - ___ Exhaust system
 - ___ Front suspension ball joints
 - ___ Fuel lines/connections
 - ___ Fuel tank vapor vent system hoses
 - ___ Transmission oil
 - ___ Propeller shaft
 - ___ Steering gear and linkage
 - ___ Steering linkage ball joints

SCHEDULE 2 MAINTENANCE

- Replace engine oil and filter
- Replace engine coolant
- Replace in-cabin microfilter
- <Replace brake fluid>
- Inspect the following:
 - ___ <Engine startability and abnormal sound>
 - ___ <Driving performance at low and accelerating speed>
 - ___ <Throttle chamber deposits>
 - ___ Axle & suspension parts
 - ___ Brake lines & cables
 - ___ Brake pads & rotors
 - ___ Differential oil (front & rear)
 - ___ Engine drive belts
 - ___ Drive shaft boots
 - ___ Exhaust system
 - ___ Front suspension ball joints
 - ___ Fuel lines/connections
 - ___ Fuel tank vapor vent system hoses
 - ___ Transmission oil
 - ___ Propeller shaft
 - ___ Steering gear and linkage
 - ___ Steering linkage ball joints

< >: Performed based on the number of service months only.

Refer to the appropriate GT-R Performance Optimization Services section for additional maintenance items.

Dealer Verified Service Stamp

Dealer name: _____

Date: _____

Mileage: _____

30,000 MILES OR 30 MONTHS

SCHEDULE 1 MAINTENANCE

- Replace engine oil and filter
- [Replace engine air filter]
- Inspect the following:
 - Axle & suspension parts
 - Brake pads & rotors
 - Drive shaft boots
 - Exhaust system
 - Front suspension ball joints
 - Propeller shaft
 - Steering gear and linkage
 - Steering linkage ball joints

SCHEDULE 2 MAINTENANCE

- Replace engine oil and filter
- [Replace engine air filter]

[]: Performed based on the mileage only.

Dealer Verified Service Stamp

Dealer name: _____

Date: _____

Mileage: _____

36,000 MILES OR 36 MONTHS

SCHEDULE 1 MAINTENANCE

- [Replace engine oil and filter]
- Replace in-cabin microfilter
- [Replace transmission oil]
- [Replace differential oil (front & rear)]
- Inspect the following:
 - __ <Engine startability and abnormal sound>
 - __ <Driving performance at low and accelerating speed>
 - __ <Throttle chamber deposits>
 - __ Engine drive belts
 - __ Axle & suspension parts
 - __ Brake lines & cables
 - __ Brake pads & rotors
 - __ Drive shaft boots
 - __ Exhaust system
 - __ Front suspension ball joints
 - __ Propeller shaft
 - __ Steering gear and linkage
 - __ Steering linkage ball joints

SCHEDULE 2 MAINTENANCE

- [Replace engine oil and filter]
- Replace in-cabin microfilter
- [Replace transmission oil]
- [Replace differential oil (front & rear)]
- Inspect the following:
 - __ <Engine startability and abnormal sound>
 - __ <Driving performance at low and accelerating speed>
 - __ <Throttle chamber deposits>
 - __ Engine drive belts
 - __ Brake lines & cables
 - __ Brake pads & rotors
 - __ Drive shaft boots
 - __ Propeller shaft

[]: Performed based on the mileage only.
< >: Performed based on the number of service months only.

Refer to the appropriate GT-R Performance Optimization Services section for additional maintenance items.

Dealer Verified Service Stamp

Dealer name: _____

Date: _____

Mileage: _____

42,000 MILES OR 42 MONTHS**SCHEDULE 1 MAINTENANCE**

- Replace engine oil and filter
- Inspect the following:
 - Axle & suspension parts
 - Brake pads & rotors
 - Drive shaft boots
 - Exhaust system
 - Front suspension ball joints
 - Propeller shaft
 - Steering gear and linkage
 - Steering linkage ball joints

SCHEDULE 2 MAINTENANCE

- Replace engine oil and filter

Dealer Verified Service Stamp

Dealer name: _____

Date: _____

Mileage: _____

GENUINE NISSAN PARTS YOU CAN RELY ON

Genuine NISSAN Oil Filters

Genuine NISSAN Oil Filters are designed specifically for your vehicle.

Genuine NISSAN Oil Filters have an anti-drainback valve that keeps oil in the filter when the engine is not running. This prevents harmful engine wear on start-up.



48,000 MILES OR 48 MONTHS

SCHEDULE 1 MAINTENANCE ☐

- Replace engine oil and filter
- Replace engine coolant
- Replace in-cabin microfilter
- <Replace brake fluid>
- Inspect the following:
 - ___ <Engine startability and abnormal sound> ___ Exhaust system
 - ___ <Driving performance at low and accelerating speed> ___ Engine settings^{1,2}
 - ___ <Throttle chamber deposits> ___ Transmission settings²
 - ___ Axle & suspension parts ___ Measurement and adjustment of wheel alignment²
 - ___ Brake lines & cables ___ Front suspension ball joints
 - ___ Brake pads & rotors ___ Fuel lines/connections
 - ___ Differential oil (front & rear) ___ Fuel tank vapor vent system hoses
 - ___ Drive shaft boots ___ Transmission oil
 - ___ Engine drive belts ___ Propeller shaft
 - ___ Steering gear and linkage
 - ___ Steering linkage ball joints

SCHEDULE 2 MAINTENANCE ☐

- Replace engine oil and filter
- Replace engine coolant
- Replace in-cabin microfilter
- <Replace brake fluid>
- Inspect the following:
 - ___ <Engine startability and abnormal sound> ___ Engine settings^{1,2}
 - ___ <Driving performance at low and accelerating speed> ___ Transmission settings²
 - ___ <Throttle chamber deposits> ___ Measurement and adjustment of wheel alignment²
 - ___ Axle & suspension parts ___ Front suspension ball joints
 - ___ Brake lines & cables ___ Fuel lines/connections
 - ___ Brake pads & rotors ___ Fuel tank vapor vent system hoses
 - ___ Differential oil (front & rear) ___ Transmission oil
 - ___ Drive shaft boots ___ Propeller shaft
 - ___ Engine drive belts ___ Steering gear and linkage
 - ___ Exhaust system ___ Steering linkage ball joints

¹ Balancing of air flow for left and right banks

² If the performance optimization services at 36 months (free of charge) including this inspection have not been finished yet, this inspection is not necessary.

< >: Performed based on the number of service months only.

Dealer Verified Service Stamp

Dealer name: _____

Date: _____

Mileage: _____

GT-R Performance Optimization Service Log Record of Service Details

Measurement and Adjustment of wheel alignment

Measured Values

FR	Total Toe-In			in/mm
	Camber	LH		Deg/min (Dec/Deg)
		RH		Deg/min (Dec/Deg)
	Caster	LH		Deg/min (Dec/Deg)
RH			Deg/min (Dec/Deg)	
RR	Total Toe-In			in/mm
	Camber	LH		Deg/min (Dec/Deg)
		RH		Deg/min (Dec/Deg)

Adjusted Values

FR	Total Toe-In			in/mm
	Camber	LH		Deg/min (Dec/Deg)
		RH		Deg/min (Dec/Deg)
	Caster	LH		Deg/min (Dec/Deg)
RH			Deg/min (Dec/Deg)	
RR	Total Toe-In			in/mm
	Camber	LH		Deg/min (Dec/Deg)
		RH		Deg/min (Dec/Deg)

Engine Settings

Measured Values

Engine Speed		rpm
Coolant Temp.		*F (°C)
Engine Oil Temp		*F (°C)
MAS A/F SE-B1		mV
MAS A/F SE-B2		mV
Throttle Angle-B1		deg
Throttle Angle-B2		deg

Transmission Settings

Measured Values

Engine Speed		rpm
Trans. Oil Temp.		*F (°C)

Status of Transmission Setting

Clutch Gear Learning	Previous Learned Value	
	Current Learned Value	

* Circle the settings as delivered to the Customer

Clutch A touch point setting value	
Clutch B touch point setting value	
Adjust clutch A capacity setting value	
Adjust clutch B capacity setting value	

Customer Name	
Address	

Mileage	Miles/km
Dealer Name	
Date	
Technician Name	

Notes:

54,000 MILES OR 54 MONTHS

SCHEDULE 1 MAINTENANCE

- [Replace engine oil and filter]
- [Replace transmission oil]
- [Replace differential oil (front & rear)]
- Inspect the following:
 - __ Axle & suspension parts
 - __ Brake pads & rotors
 - __ Drive shaft boots
 - __ Exhaust system
 - __ Front suspension ball joints
 - __ Propeller shaft
 - __ Steering gear and linkage
 - __ Steering linkage ball joints

SCHEDULE 2 MAINTENANCE

- Replace engine oil and filter
- [Replace transmission oil]
- [Replace differential oil (front & rear)]

[]: Performed based on the mileage only.

Dealer Verified Service Stamp

Dealer name: _____

Date: _____

Mileage: _____

GENUINE NISSAN PARTS YOU CAN RELY ON *

Batteries

If your vehicle is slow to start or will not start, please see your NISSAN dealer about a Genuine NISSAN Replacement Battery. Genuine NISSAN Replacement Batteries are designed to meet your vehicle's original specifications and feature an 84 Month Limited Warranty with 24 Month Free Replacement, regardless of mileage. Plus your NISSAN dealer has the knowledge and equipment to test your battery before it fails, so you can travel in confidence.



* May or may not apply outside of the United States, please inquire of your dealer.

See your participating NISSAN GT-R certified dealer for details.

60,000 MILES OR 60 MONTHS

SCHEDULE 1 MAINTENANCE

- Replace engine oil and filter
- Replace in-cabin microfilter
- [Replace engine air filter]
- [Replace spark plugs]³
- <Replace brake hoses>
- Inspect the following:

<ul style="list-style-type: none"> ___ <Engine startability and abnormal sound> ___ <Driving performance at low and accelerating speed> ___ <Throttle chamber deposits> ___ Engine settings^{1,2} ___ Transmission settings² ___ Measurement and adjustment of wheel alignment² ___ Axle & suspension parts ___ Brake lines & cables 	<ul style="list-style-type: none"> ___ Brake pads & rotors ___ Differential oil (front & rear) ___ Drive shaft boots ___ Engine drive belts ___ Exhaust system ___ Front suspension ball joints ___ Transmission oil ___ Propeller shaft ___ Steering gear and linkage ___ Steering linkage ball joints
--	---

SCHEDULE 2 MAINTENANCE

- Replace engine oil and filter
- Replace in-cabin microfilter
- [Replace engine air filter]
- [Replace spark plugs]³
- Replace brake hoses
- Inspect the following:

<ul style="list-style-type: none"> ___ <Engine startability and abnormal sound> ___ <Driving performance at low and accelerating speed> ___ <Throttle chamber deposits> ___ Engine settings^{1,2} ___ Transmission settings² ___ Measurement and adjustment of wheel alignment² 	<ul style="list-style-type: none"> ___ Brake lines & cables ___ Brake pads & rotors ___ Differential oil (front & rear) ___ Drive shaft boots ___ Engine drive belts ___ Transmission oil ___ Propeller shaft
---	--

¹ Balancing of air flow for left and right banks

² If the performance optimization services at 36 months (free of charge) including this inspection have not been finished yet, this inspection is not necessary.

³ Replace spark plug when the spark plug gap reaches 1.0 mm (0.039 in) or more, even if within specified periodic replacement mileage.

[]: Performed based on the mileage only.

< >: Performed based on the number of service months only.

Dealer Verified Service Stamp

Dealer name: _____

Date: _____

Mileage: _____

GT-R Performance Optimization Service Log Record of Service Details

Measurement and Adjustment of wheel alignment

Measured Values

FR	Total Toe-In			in/mm
	Camber	LH		Deg/min (Dec/Deg)
		RH		Deg/min (Dec/Deg)
	Caster	LH		Deg/min (Dec/Deg)
RH			Deg/min (Dec/Deg)	
RR	Total Toe-In			in/mm
	Camber	LH		Deg/min (Dec/Deg)
		RH		Deg/min (Dec/Deg)

Adjusted Values

FR	Total Toe-In			in/mm
	Camber	LH		Deg/min (Dec/Deg)
		RH		Deg/min (Dec/Deg)
	Caster	LH		Deg/min (Dec/Deg)
RH			Deg/min (Dec/Deg)	
RR	Total Toe-In			in/mm
	Camber	LH		Deg/min (Dec/Deg)
		RH		Deg/min (Dec/Deg)

Engine Settings

Measured Values

Engine Speed		rpm
Coolant Temp.		*F (°C)
Engine Oil Temp		*F (°C)
MAS A/F SE-B1		mV
MAS A/F SE-B2		mV
Throttle Angle-B1		deg
Throttle Angle-B2		deg

Transmission Settings

Measured Values

Engine Speed		rpm
Trans. Oil Temp.		*F (°C)

Status of Transmission Setting

Clutch Gear Learning	Previous Learned Value
	Current Learned Value

* Circle the settings as delivered to the Customer

Clutch A touch point setting value	
Clutch B touch point setting value	
Adjust clutch A capacity setting value	
Adjust clutch B capacity setting value	

Customer Name	
Address	

Mileage		Miles/km
Dealer Name		
Date		
Technician Name		

Notes:

66,000 MILES OR 66 MONTHS**SCHEDULE 1 MAINTENANCE**

- Replace engine oil and filter
- Inspect the following:
 - ___ Axle & suspension parts
 - ___ Brake pads & rotors
 - ___ Drive shaft boots
 - ___ Exhaust system
 - ___ Front suspension ball joints
 - ___ Propeller shaft
 - ___ Steering gear and linkage
 - ___ Steering linkage ball joints

SCHEDULE 2 MAINTENANCE

- Replace engine oil and filter

Dealer Verified Service Stamp

Dealer name: _____

Date: _____

Mileage: _____

NISSAN SERVICES DESIGNED WITH YOU IN MIND*

Your NISSAN Dealer is Your Complete Source for Tires

- Original Equipment Tires and Other Major Brands
- Competitive Pricing
- Road Hazard Protection Included With Each Tire**
- Convenience
- Factory Trained Technicians

Tires are an important component of your NISSAN driving experience. They provide the four points of contact between your vehicle and the road and affect acceleration, braking, cornering, load-carrying capacity, and overall handling and performance.

NISSAN engineers perform extensive tests to help determine which tires are best suited for use on NISSAN vehicles. Replacing the tires on your NISSAN with those that meet the Original Equipment specifications will help maximize your vehicle's handling, comfort and safety.

* May differ or not apply outside the United States, please inquire of your dealer.

** Excludes Medalist Brand

See your participating NISSAN dealer for details.



72,000 MILES OR 72 MONTHS

SCHEDULE 1 MAINTENANCE ▣

- Replace engine oil and filter
- Replace engine coolant
- [Replace transmission oil]
- [Replace differential oil (front & rear)]
- Replace in-cabin microfilter
- <Replace brake fluid>
- Inspect the following:

<ul style="list-style-type: none"> <input type="checkbox"/> <Engine startability and abnormal sound> <input type="checkbox"/> <Driving performance at low and accelerating speed> <input type="checkbox"/> <Throttle chamber deposits> <input type="checkbox"/> Axle & suspension parts <input type="checkbox"/> Brake lines & cables <input type="checkbox"/> Brake pads & rotors <input type="checkbox"/> Engine settings^{1,2} <input type="checkbox"/> Transmission settings² 	<ul style="list-style-type: none"> <input type="checkbox"/> Measurement and adjustment of wheel alignment² <input type="checkbox"/> Drive shaft boots <input type="checkbox"/> Engine drive belts <input type="checkbox"/> Exhaust system <input type="checkbox"/> Front suspension ball joints <input type="checkbox"/> Fuel lines/connections <input type="checkbox"/> Fuel tank vapor vent system hoses <input type="checkbox"/> Propeller shaft <input type="checkbox"/> Steering gear and linkage <input type="checkbox"/> Steering linkage ball joints
--	---

SCHEDULE 2 MAINTENANCE ▣

- Replace engine oil and filter
- Replace engine coolant
- [Replace transmission oil]
- [Replace differential oil (front & rear)]
- Replace in-cabin microfilter
- <Replace brake fluid>
- Inspect the following:

<ul style="list-style-type: none"> <input type="checkbox"/> <Engine startability and abnormal sound> <input type="checkbox"/> <Driving performance at low and accelerating speed> <input type="checkbox"/> <Throttle chamber deposits> <input type="checkbox"/> Axle & suspension parts <input type="checkbox"/> Brake lines & cables <input type="checkbox"/> Brake pads & rotors <input type="checkbox"/> Engine settings^{1,2} <input type="checkbox"/> Transmission settings² <input type="checkbox"/> Measurement and adjustment of wheel alignment² 	<ul style="list-style-type: none"> <input type="checkbox"/> Drive shaft boots <input type="checkbox"/> Engine drive belts <input type="checkbox"/> Exhaust system <input type="checkbox"/> Front suspension ball joints <input type="checkbox"/> Fuel lines/connections <input type="checkbox"/> Fuel tank vapor vent system hoses <input type="checkbox"/> Propeller shaft <input type="checkbox"/> Steering gear and linkage <input type="checkbox"/> Steering linkage ball joints
--	---

¹ Balancing of air flow for left and right banks

² If the performance optimization services at 36 months (free of charge) including this inspection have not been finished yet, this inspection is not necessary.

[]: Performed based on the mileage only.

< >: Performed based on the number of service months only.

Dealer Verified Service Stamp

Dealer name: _____

Date: _____

Mileage: _____

GT-R Performance Optimization Service Log Record of Service Details

Measurement and Adjustment of wheel alignment

Measured Values

FR	Total Toe-In			in/mm
	Camber	LH		Deg/min (Dec/Deg)
		RH		Deg/min (Dec/Deg)
	Caster	LH		Deg/min (Dec/Deg)
RH			Deg/min (Dec/Deg)	
RR	Total Toe-In			in/mm
	Camber	LH		Deg/min (Dec/Deg)
		RH		Deg/min (Dec/Deg)

Adjusted Values

FR	Total Toe-In			in/mm
	Camber	LH		Deg/min (Dec/Deg)
		RH		Deg/min (Dec/Deg)
	Caster	LH		Deg/min (Dec/Deg)
RH			Deg/min (Dec/Deg)	
RR	Total Toe-In			in/mm
	Camber	LH		Deg/min (Dec/Deg)
		RH		Deg/min (Dec/Deg)

Engine Settings

Measured Values

Engine Speed		rpm
Coolant Temp.		*F (°C)
Engine Oil Temp		*F (°C)
MAS A/F SE-B1		mV
MAS A/F SE-B2		mV
Throttle Angle-B1		deg
Throttle Angle-B2		deg

Transmission Settings

Measured Values

Engine Speed		rpm
Trans. Oil Temp.		*F (°C)

Status of Transmission Setting

Clutch Gear Learning	Previous Learned Value
	Current Learned Value

* Circle the settings as delivered to the Customer

Clutch A touch point setting value	
Clutch B touch point setting value	
Adjust clutch A capacity setting value	
Adjust clutch B capacity setting value	

Customer Name	
Address	

Mileage	Miles/km
Dealer Name	
Date	
Technician Name	

Notes:

78,000 MILES OR 78 MONTHS**SCHEDULE 1 MAINTENANCE**

- Replace engine oil and filter
- Inspect the following:
 - Axle & suspension parts
 - Brake pads & rotors
 - Drive shaft boots
 - Exhaust system
 - Front suspension ball joints
 - Propeller shaft
 - Steering gear and linkage
 - Steering linkage ball joints

SCHEDULE 2 MAINTENANCE

- Replace engine oil and filter

Dealer Verified Service Stamp

Dealer name: _____

Date: _____

Mileage: _____

GENUINE NISSAN PARTS YOU CAN RELY ON

Wiper Blades

Genuine NISSAN Wiper Blades and Arms are designed to fit your NISSAN and can be installed by any NISSAN dealer in just minutes.



84,000 MILES OR 84 MONTHS

SCHEDULE 1 MAINTENANCE

- Replace engine oil and filter
- Replace in-cabin microfilter
- Inspect the following:
 - ___ Engine settings^{1,2}
 - ___ Transmission settings²
 - ___ Measurement and adjustment of wheel alignment²
 - ___ Axle & suspension parts
 - ___ Brake lines & cables
 - ___ Brake pads & rotors
 - ___ Differential oil (front & rear)
 - ___ Drive shaft boots
 - ___ Engine drive belts
 - ___ Exhaust system
 - ___ Front suspension ball joints
 - ___ Propeller shaft
 - ___ Transmission oil
 - ___ Steering gear and linkage
 - ___ Steering linkage ball joints
 - ___ <Engine startability and abnormal sound>
 - ___ <Driving performance at low and accelerating speed>
 - ___ <Throttle chamber deposits>

¹ Balancing of air flow for left and right banks

² If the performance optimization services at 36 months (free of charge) including this inspection have not been finished yet, this inspection is not necessary.

SCHEDULE 2 MAINTENANCE

- Replace engine oil and filter
- Replace in-cabin microfilter
- Inspect the following:
 - ___ Engine settings^{1,2}
 - ___ Transmission settings²
 - ___ Measurement and adjustment of wheel alignment²
 - ___ Brake lines & cables
 - ___ Brake pads & rotors
 - ___ Differential oil (front & rear)
 - ___ Drive shaft boots
 - ___ Engine drive belts
 - ___ Transmission oil
 - ___ Propeller shaft
 - ___ <Engine startability and abnormal sound>
 - ___ <Driving performance at low and accelerating speed>
 - ___ <Throttle chamber deposits>

< >: Performed based on the number of service months only.

Dealer Verified Service Stamp

Dealer name: _____

Date: _____

Mileage: _____

GT-R Performance Optimization Service Log Record of Service Details

Measurement and Adjustment of wheel alignment

Measured Values

FR	Total Toe-In			in/mm
	Camber	LH		Deg/min (Dec/Deg)
		RH		Deg/min (Dec/Deg)
	Caster	LH		Deg/min (Dec/Deg)
RH			Deg/min (Dec/Deg)	
RR	Total Toe-In			in/mm
	Camber	LH		Deg/min (Dec/Deg)
		RH		Deg/min (Dec/Deg)

Adjusted Values

FR	Total Toe-In			in/mm
	Camber	LH		Deg/min (Dec/Deg)
		RH		Deg/min (Dec/Deg)
	Caster	LH		Deg/min (Dec/Deg)
RH			Deg/min (Dec/Deg)	
RR	Total Toe-In			in/mm
	Camber	LH		Deg/min (Dec/Deg)
		RH		Deg/min (Dec/Deg)

Engine Settings

Measured Values

Engine Speed		rpm
Coolant Temp.		*F (°C)
Engine Oil Temp		*F (°C)
MAS A/F SE-B1		mV
MAS A/F SE-B2		mV
Throttle Angle-B1		deg
Throttle Angle-B2		deg

Transmission Settings

Measured Values

Engine Speed		rpm
Trans. Oil Temp.		*F (°C)

Status of Transmission Setting

Clutch Gear Learning	Previous Learned Value	
	Current Learned Value	

* Circle the settings as delivered to the Customer

Clutch A touch point setting value	
Clutch B touch point setting value	
Adjust clutch A capacity setting value	
Adjust clutch B capacity setting value	

Customer Name	
Address	

Mileage	Miles/km
Dealer Name	
Date	
Technician Name	

Notes:

90,000 MILES OR 90 MONTHS

SCHEDULE 1 MAINTENANCE

- Replace engine oil and filter
- [Replace engine air filter]
- [Replace transmission oil]
- [Replace differential oil (front & rear)]
- Inspect the following:
 - ___ Axle & suspension parts
 - ___ Brake pads & rotors
 - ___ Drive shaft boots
 - ___ Exhaust system
 - ___ Front suspension ball joints
 - ___ Propeller shaft
 - ___ Steering gear and linkage
 - ___ Steering linkage ball joints

SCHEDULE 2 MAINTENANCE

- Replace engine oil and filter
- [Replace engine air filter]
- [Replace transmission oil]
- [Replace differential oil (front & rear)]

[]: Performed based on the mileage only.

Dealer Verified Service Stamp

Dealer name: _____

Date: _____

Mileage: _____

GENUINE NISSAN PARTS YOU CAN RELY ON

In-Cabin Microfilter

The In-Cabin Microfilter filters the air you breathe in your vehicle. This system filters both outside and re-circulated air used by the air conditioning system in your vehicle. Replacing the Microfilter every year or 12,000 miles is the best way to help prevent road dust, pollen and other air pollutants from entering the interior of your vehicle and the air you breathe. If your vehicle is not equipped with an In-Cabin Microfilter system – see your NISSAN dealer about getting one installed – you'll breathe easier.



New Microfilter



Requires Replacement

96,000 MILES OR 96 MONTHS

SCHEDULE 1 MAINTENANCE

- Replace engine oil and filter
- Replace engine coolant
- Replace in-cabin microfilter
- <Replace brake fluid>
- Inspect the following:
 - <Engine startability and abnormal sound>
 - <Driving performance at low and accelerating speed>
 - <Throttle chamber deposits>
 - Axle & suspension parts
 - Brake lines & cables
 - Brake pads & rotors
 - Transmission oil
 - Differential oil (front & rear)
 - Drive shaft boots
 - Engine drive belts
 - Engine settings^{1,2}
 - Transmission settings²
 - Measurement and adjustment of wheel alignment²
 - Exhaust system
 - Front suspension ball joints
 - Fuel lines/connections
 - Fuel tank vapor vent system hoses
 - Propeller shaft
 - Steering gear and linkage
 - Steering linkage ball joints

SCHEDULE 2 MAINTENANCE

- Replace engine oil and filter
- Replace engine coolant
- Replace in-cabin microfilter
- <Replace brake fluid>
- Inspect the following:
 - <Engine startability and abnormal sound>
 - <Driving performance at low and accelerating speed>
 - <Throttle chamber deposits>
 - Axle & suspension parts
 - Brake lines & cables
 - Brake pads & rotors
 - Transmission oil
 - Differential oil (front & rear)
 - Drive shaft boots
 - Engine drive belts
 - Engine settings^{1,2}
 - Transmission settings²
 - Measurement and adjustment of wheel alignment²
 - Exhaust system
 - Front suspension ball joints
 - Fuel lines/connections
 - Fuel tank vapor vent system hoses
 - Propeller shaft
 - Steering gear and linkage
 - Steering linkage ball joints

¹ Balancing of air flow for left and right banks

² If the performance optimization services at 36 months (free of charge) including this inspection have not been finished yet, this inspection is not necessary.

< >: Performed based on the number of service months only.

Dealer Verified Service Stamp

Dealer name: _____

Date: _____

Mileage: _____

GT-R Performance Optimization Service Log Record of Service Details

Measurement and Adjustment of wheel alignment

Measured Values

FR	Total Toe-In			in/mm
	Camber	LH		Deg/min (Dec/Deg)
		RH		Deg/min (Dec/Deg)
	Caster	LH		Deg/min (Dec/Deg)
RH			Deg/min (Dec/Deg)	
RR	Total Toe-In			in/mm
	Camber	LH		Deg/min (Dec/Deg)
		RH		Deg/min (Dec/Deg)

Adjusted Values

FR	Total Toe-In			in/mm
	Camber	LH		Deg/min (Dec/Deg)
		RH		Deg/min (Dec/Deg)
	Caster	LH		Deg/min (Dec/Deg)
RH			Deg/min (Dec/Deg)	
RR	Total Toe-In			in/mm
	Camber	LH		Deg/min (Dec/Deg)
		RH		Deg/min (Dec/Deg)

Engine Settings

Measured Values

Engine Speed		rpm
Coolant Temp.		°F (°C)
Engine Oil Temp		°F (°C)
MAS A/F SE-B1		mV
MAS A/F SE-B2		mV
Throttle Angle-B1		deg
Throttle Angle-B2		deg

Transmission Settings

Measured Values

Engine Speed		rpm
Trans. Oil Temp.		°F (°C)

Status of Transmission Setting

Clutch Gear Learning	Previous Learned Value
	Current Learned Value

* Circle the settings as delivered to the Customer

Clutch A touch point setting value	
Clutch B touch point setting value	
Adjust clutch A capacity setting value	
Adjust clutch B capacity setting value	

Customer Name	
Address	

Mileage	Miles/km
Dealer Name	
Date	
Technician Name	

Notes:

NOTES:



Nissan, the Nissan logo, and Nissan model names are Nissan trademarks.
©2010 Nissan North America, Inc. All rights reserved.

Publication No.: MB1E 0R35U0
Printing : December 2009