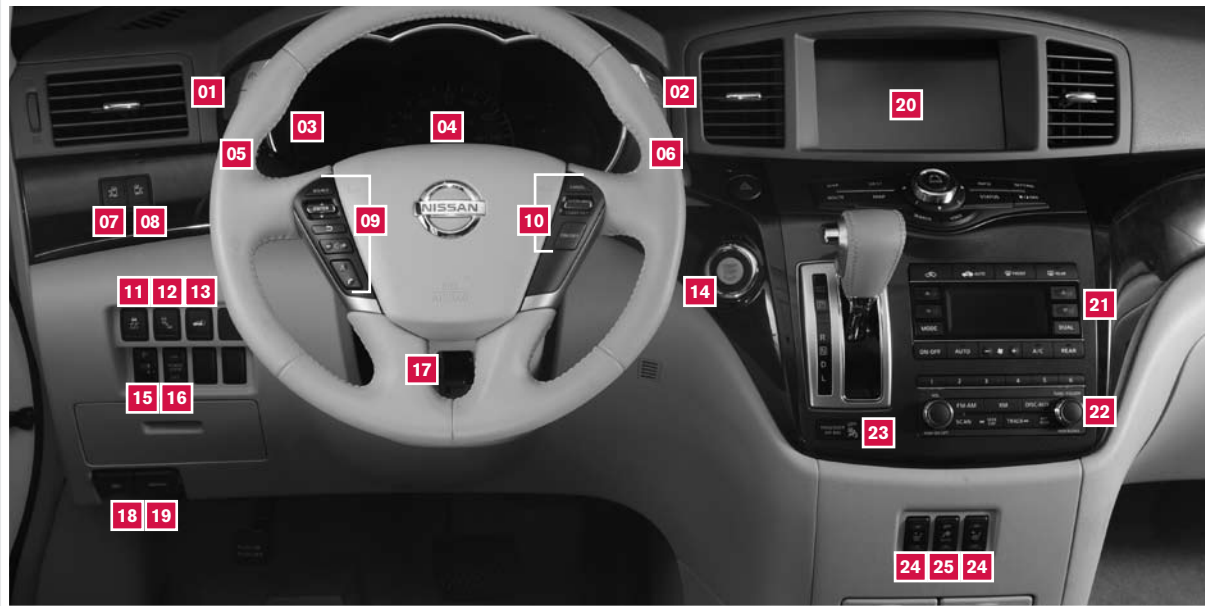


2011 QUEST

QUICK REFERENCE GUIDE





- | | | | |
|----------------------------------------------|----------------------------------------------------------|------------------------------------------------|-------------------------------------------------|
| 01 INSTRUMENT BRIGHTNESS CONTROL* | 08 PASSENGER'S SIDE SLIDING DOOR SWITCH | 14 PUSH BUTTON IGNITION SWITCH | 20 CONTROL PANEL DISPLAY |
| 02 TRIP COMPUTER / RESET SWITCHES* | 09 STEERING WHEEL SWITCHES FOR AUDIO / BLUETOOTH* | 15 HEADLIGHT AIMING CONTROL* | 21 AUTOMATIC CLIMATE CONTROLS |
| 03 LOW TIRE PRESSURE WARNING LIGHT | 10 CRUISE CONTROL | 16 POWER DOOR MAIN SWITCH* | 22 AUDIO SYSTEM |
| 04 DOT MATRIX LIQUID CRYSTAL DISPLAY* | 11 VEHICLE DYNAMIC CONTROL (VDC) OFF SWITCH* | 17 TILT AND TELESCOPIC STEERING COLUMN* | 23 FRONT PASSENGER AIR BAG STATUS LIGHT* |
| 05 HEADLIGHT AND TURN SIGNAL CONTROL | 12 BLIND SPOT WARNING (BSW) SYSTEM SWITCH | 18 FUEL-FILLER DOOR RELEASE | 24 HEATED SEAT SWITCHES* |
| 06 WINDSHIELD WIPER / WASHER SWITCH | 13 POWER LIFTGATE SWITCH | 19 HOOD RELEASE* | 25 POWER OUTLET MAIN SWITCH* |
| 07 DRIVER'S SIDE SLIDING DOOR SWITCH | | | |

*See your Owner's Manual for more information.

NEW SYSTEM FEATURES

Blind Spot Warning (BSW) System (if so equipped) 2
 Advanced Climate Control System (if so equipped) 2

ESSENTIAL INFORMATION

Loose Fuel Cap 3
 Tire Pressure Monitoring System (TPMS) 3

FIRST DRIVE FEATURES

NISSAN Intelligent Key™ System 4
 Power Seat Adjustments (if so equipped) 4
 Outside Mirror Control Switch 4
 Starting/Stopping the Engine 5
 Headlight Control Switch 5
 Windshield Wiper Switch 5
 Automatic Climate Controls (if so equipped) 6
 FM/AM/XM®* Radio with CD/DVD Player (if so equipped) 7
 Parking Brake 7
 Auto Sliding Door Release (if so equipped) 8
 Power Liftgate Release (if so equipped) 9
 Fuel-Filler Door 9

SYSTEM GUIDE

Cruise Control 10
 Bluetooth® Hands-free Phone System (if so equipped) 10
 Navigation System (if so equipped) 10
 NISSAN Mobile Entertainment System (MES) (if so equipped) 11
 HomeLink® Universal Transceiver (if so equipped) 11



- Always wear your seat belt.
- Supplemental air bags do not replace proper seat belt usage.
- Children 12 and under should always ride in the rear seat properly secured in child restraints or seat belts according to their age and weight.
- Do not drink and drive.

For more information, refer to the **“Safety -- Seats, seat belts and supplemental restraint system (section 1)”** of your Owner’s Manual.



Additional information about your vehicle is also available in your Owner’s Manual, Navigation System Owner’s Manual, Electronic Quick Reference Guide (EQRG) and at www.nissanusa.com.



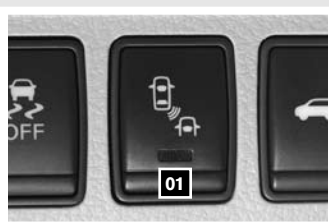
This easy-to-use Quick Reference Guide is intended to help you more fully appreciate some of the unique features and functions of your new vehicle. However, it is not intended to replace your Owner’s Manual. The Owner’s Manual contains more detailed information to help you better understand the important safety warnings, features, operation and maintenance of your vehicle. All information, specifications, photographs and illustrations in this publication are those in effect at the time of printing. NISSAN reserves the right to change specifications or design without notice and without obligation.

new system features

BLIND SPOT WARNING (BSW) SYSTEM (if so equipped)

- The control switch **01** is located on the left side of the instrument panel.
- The system automatically turns on when the engine is started and the warning system ON indicator light on the switch illuminates.
- The indicator light **02**, located in the outside mirror, will activate when the BSW system detects a vehicle in the detection zone.
- If a turn signal is activated in the direction of a detected vehicle, a chime sounds twice and the BSW indicator light will flash.
- To cancel the system, push the control switch and the warning system ON indicator light will turn off.

For more information, refer to the “**Starting and driving (section 5)**” of your Owner’s Manual.




ADVANCED CLIMATE CONTROL SYSTEM (if so equipped)

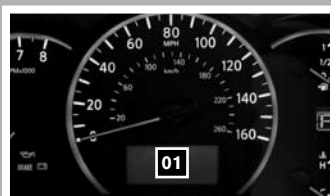
- The advanced climate control system keeps the air inside the vehicle clean, using ion control and automatic air intake control with exhaust gas detecting sensors.
- When ion control is activated, this unit generates highly concentrated Plasmacluster ions into the air blown from the vents, reducing the odor absorbed inside the vehicle.
- When the automatic air intake control is activated, the exhaust gas detection sensor can detect odors such as pulp or chemicals, and exhaust gas such as gasoline or diesel. When such odors or gases are detected, the system automatically changes from the outside air circulation mode to the recirculation mode.

For more information, refer to the “**Center display, heater, air conditioner, audio, phone and voice recognition systems (section 4)**” of your Owner’s Manual.

LOOSE FUEL CAP

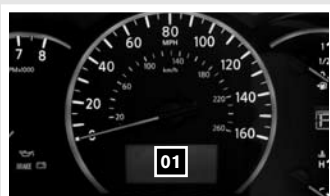
- A LOOSE FUEL CAP warning message will appear in the dot matrix liquid crystal display **01** when the fuel-filler cap is not tightened correctly.
- The warning message will disappear when the vehicle detects the fuel-filler cap is properly tightened and the reset button **02** is pressed.
- If the cap is not properly tightened, the Malfunction Indicator Light  may illuminate.

For more information, refer to the “**Instruments and controls (section 2)**” and the “**Pre-driving checks and adjustments (section 3)**” of your Owner’s Manual.



TIRE PRESSURE MONITORING SYSTEM (TPMS)

- A CHECK TIRE PRESSURE warning message will appear in the dot matrix liquid crystal display **01** and the TPMS light will illuminate when one or more tires are low on pressure and air is needed.
- When adding air to an under-inflated tire, the TPMS will provide a tire inflation indicator with audible and visual cues that indicate when the tire has reached the recommended COLD tire pressure.
- To use the tire inflation indicator:
 1. Move the shift lever to the P (PARK) position and apply the parking brake.
 2. Place the ignition switch in the ON position, but do not start the engine.
 3. Add air to the underinflated tire and within a few seconds, the hazard warning lights will flash.
 4. When the designated tire pressure is reached, the horn will beep once and the hazard warning flashers will stop.
 5. Repeat this procedure for any additional underinflated tires.
- After tire pressures are adjusted, drive the vehicle at speeds above 16 MPH (25km/h) and the warning and indicator light will disappear.
- When the low tire pressure warning light flashes for approximately 1 minute and then remains on, the TPMS is not functioning properly. Have the system checked by a NISSAN dealer.
- Tire pressure rises and falls depending on the heat caused by the vehicle’s operation and the outside temperature. Low outside temperature can lower the temperature of the air inside the tire, which can cause a lower tire inflation pressure. This may cause the low tire pressure warning light to illuminate. If the warning light illuminates in low ambient temperature, check the tire pressure in all four tires.



For more information, refer to the “**Instruments and controls (section 2)**” and the “**Starting and driving (section 5)**” of your Owner’s Manual.

first drive features

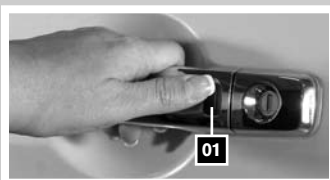
NISSAN INTELLIGENT KEY™ SYSTEM

The NISSAN Intelligent Key™ System allows you to lock or unlock your vehicle, open your liftgate or auto sliding doors (if so equipped), and start the engine.

- To lock or unlock any door, push the corresponding door handle request switch **01** once.
- Push the door handle request switch **01** within 1 minute of unlocking the door and all other doors will unlock.

NOTE: It is important to make sure the Intelligent Key is with you (that is, in your pocket or purse).

For more information, refer to the “**Pre-driving checks and adjustments (section 3)**” of your Owner’s Manual.

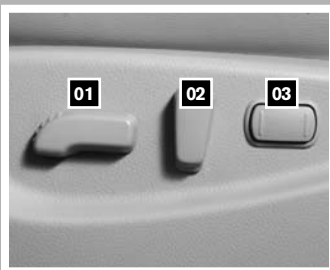


POWER SEAT ADJUSTMENTS (if so equipped)

- Push the control switch **01** forward or backward to slide the seat forward or backward.
- Push the switch **02** forward or backward to adjust the angle of the seatback.

SEAT LIFTER (if so equipped for driver’s seat)

- To adjust the angle and height of the seat cushion, push the front or rear end of the switch **01** up or down.



LUMBAR SUPPORT (if so equipped)

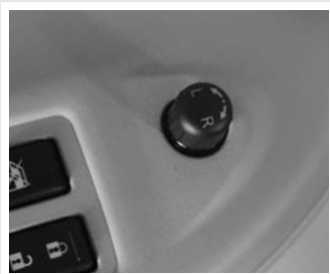
- To adjust the seat lumbar area, push the front or back portion of the switch **03**.

For more information, refer to the “**Safety — Seats, seat belts and supplemental restraint system (section 1)**” of your Owner’s Manual.

OUTSIDE MIRROR CONTROL SWITCH

- Turn the control switch right or left to select the right or left side mirror.
- Move the control switch up, down, right or left to adjust the mirror angle.

For more information, refer to the “**Pre-driving checks and adjustments (section 3)**” of your Owner’s Manual.



STARTING/STOPPING THE ENGINE

- Depress the brake pedal.
- Press the ignition switch **START/STOP** button to start the engine.

NOTE: It is important to make sure the NISSAN Intelligent Key™ is with you (that is, in your pocket or purse).

TURNING THE ENGINE OFF

- Move the shift lever to the P (PARK) position and apply the parking brake.
- Press the ignition switch **START/STOP** button to turn the engine off.



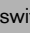

EMERGENCY ENGINE SHUT OFF

To shut off the engine in an emergency situation while driving, perform one of the following procedures:

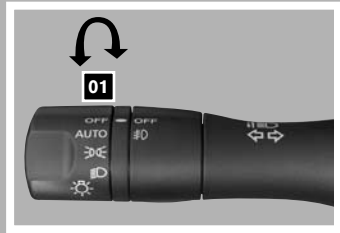
- Rapidly push the push button ignition switch 3 consecutive times, or
- Push and hold the push button ignition switch for more than 2 seconds.

For more information, refer to the “**Starting and driving (section 5)**” of your Owner’s Manual.

HEADLIGHT CONTROL SWITCH

- Turn the headlight control switch **01** to the  position to turn on the front parking, side marker, tail, license plate and instrument panel lights.
- Turn the switch **01** to the  position to turn on the headlights.

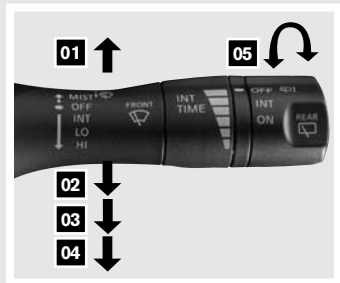
For more information, refer to the “**Instruments and controls (section 2)**” of your Owner’s Manual.



WINDSHIELD WIPER SWITCH

Move the lever to the following positions to operate the windshield wipers:

- 01** Mist (**MIST**) - One sweep operation of the front wipers.
- 02** Intermittent (**INT**) - Operates the front wipers intermittently.
- 03** Low (**LO**) - Front wipers operate at a continuous low-speed.
- 04** High (**HI**) - Front wipers operate at a continuous high-speed.
- 05** Rear Wiper (**REAR**) - Twist the end of the lever to operate the first (**INT**) or the second (**ON**) speed settings for the rear wiper.



For more information, refer to the “**Instruments and controls (section 2)**” of your Owner’s Manual.

first drive features



AUTOMATIC CLIMATE CONTROLS (if so equipped)

01 AUTO BUTTON

- Press the **AUTO** button to automatically maintain constant temperature, air flow distribution and fan speed, after the desired temperature is set manually.

02 FAN SPEED CONTROL BUTTON

- Press the fan speed control button to manually adjust the fan speed down – or up +.

03 TEMPERATURE CONTROL BUTTONS

- Press the driver's side temperature control buttons up ▲ for warmer air or down ▼ for cooler air.

04 DEFROSTING/DEFOGGING FRONT AND SIDE WINDOWS

- Press the front defroster button  **FRONT** to turn the system on or off.

05 REAR WINDOW AND OUTSIDE MIRRORS (if so equipped) DEFROSTER SWITCH

- Push the rear window and outside mirror defroster switch  **REAR** to turn the system on or off.

For more information, refer to the “**Instruments and controls (section 2)**” and the “**Center display, heater, air conditioner, audio, phone and voice recognition systems (section 4)**” of your Owner's Manual.



FM/AM/XM^{®*} RADIO WITH CD/DVD PLAYER (if so equipped)

01 VOLUME ON-OFF CONTROL KNOB

- Press the **VOLUME ON-OFF** knob to turn the system on or off.
- Turn the **VOLUME ON-OFF** knob right or left to increase or decrease the volume.

02 TUNE/FOLDER/AUDIO CONTROL KNOB

- To manually tune the radio, turn the **TUNE/FOLDER/AUDIO** knob left or right.

*XM[®] Satellite Radio is only available on vehicles equipped with optional XM[®] satellite subscription service.

For more information, refer to the “**Center display, heater, air conditioner, audio, phone and voice recognition systems (section 4)**” of your Owner’s Manual.

PARKING BRAKE

- To apply, firmly depress the parking brake pedal **01** .
- To release, firmly press the foot brake **02** , then press the parking brake pedal **01** and the parking brake will release.

For more information, refer to the “**Starting and driving (section 5)**” of your Owner’s Manual.



first drive features

AUTO SLIDING DOOR RELEASE (if so equipped)

Once unlocked, use one of the following methods to open the auto sliding doors:

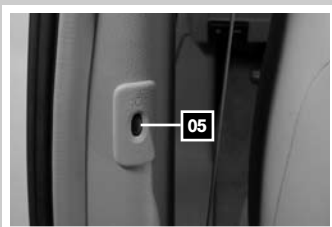
- Press the driver's side **01** or the passenger's side **02** button on the NISSAN Intelligent Key™ for approximately 1 second.



- From the driver's seat, push the driver's side **03** or passenger's side **04** sliding door switch.



- From the second row seats, push the sliding door switch **05** for approximately 1 second.




- Pull the sliding door handle (inside or outside) until you hear the chime.

For more information, refer to the “**Pre-driving checks and adjustments (section 3)**” of your Owner's Manual.



POWER LIFTGATE RELEASE (if so equipped)

Use one of the following methods to open the liftgate:

- Press the  button on the NISSAN Intelligent Key™ for more than 1 second.

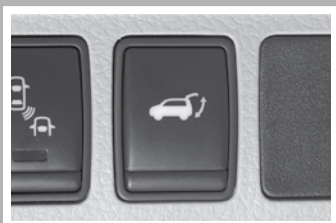


- Push the liftgate opener switch while carrying the Intelligent Key with you.



- From inside the vehicle, push the power liftgate switch.

For more information, refer to the “**Pre-driving checks and adjustments (section 3)**” of your Owner’s Manual.



FUEL-FILLER DOOR

- To open the fuel-filler door, pull the release **01** located on the driver’s side instrument panel.



- The fuel-filler door is located on the driver’s side of the vehicle.

For more information, refer to the “**Pre-driving checks and adjustments (section 3)**” of your Owner’s Manual.



system guide

CRUISE CONTROL

- The cruise control system enables you to set a constant cruising speed.
- The system will automatically maintain the set speed until you tap the brake pedal, accelerate, cancel or turn the system off.

For more information, refer to the **“Starting and driving (section 5)”** of your Owner’s Manual.



BLUETOOTH® HANDS-FREE PHONE SYSTEM (if so equipped)

- With an overhead microphone and sound transmitted through the audio system speakers, the Bluetooth® Hands-free Phone System utilizes Bluetooth wireless technology and voice recognition to provide hands-free cellular phone communication.

For more information, refer to the **“Center display, heater, air conditioner, audio, phone and voice recognition systems (section 4)”** of your Owner’s Manual or please visit www.nissanusa.com/bluetooth.



NAVIGATION SYSTEM (if so equipped)

- Your Navigation System can calculate a route from the current location to a preferred destination. The real-time map display and turn-by-turn voice guidance will lead you along the route.
- The Navigation System will continually update your vehicle’s position. If you have deviated from the original route, it will recalculate the route from your current location.
- The Navigation System can also provide you with important data such as; distance to empty, your tire rotation schedule and other maintenance interval reminders.

For more information, refer to the Navigation System Owner’s Manual.

NISSAN Mobile Entertainment System (MES) (if so equipped)

- With this Entertainment System, you can play video files via a DVD or compatible USB device, providing images and sound both in the front and rear display screens.
- You can also operate auxiliary devices such as; video games, camcorders or portable video players through the auxiliary jacks.
- Use the remote controller, provided with the system, to operate the rear display screen.
- Use the headphones, also provided with the system, to listen to audio wirelessly and independently.
- To view movies on the control panel display, stop the vehicle in a safe location, move the shift lever to the P (PARK) position and apply the parking brake.
- To reduce driver distraction, movies will not be shown on the front display while the vehicle is in any drive position.



For more information, refer to the “**Center display, heater, air conditioner, audio, phone and voice recognition systems (section 4)**” of your Owner’s Manual.



HOMELINK® UNIVERSAL TRANSCEIVER (if so equipped)

- The HomeLink® system can learn and consolidate the functions of up to three different hand-held transmitters, operating items such as; garage doors, property gates, outdoor and indoor lights or alarm systems.

For more information, refer to the “**Instruments and controls (section 2)**” of your Owner’s Manual, the HomeLink® website at www.homelink.com or call 1-800-355-3515.



Nissan, the Nissan Brand Symbol, "SHIFT_" tagline,
Z and Nissan model names are Nissan trademarks.
© 2010 Nissan North America, Inc.
QR1E 0E52U0
Printing: November 2010 (01)

